

**GENERAL
ARRANGEMENT OF
1000kVA 11000/415V
TRANSFORMER WITH
LV CAB & RN2D**

Drawn By: T.B. Checked By: J.C. Approved By: J.C.

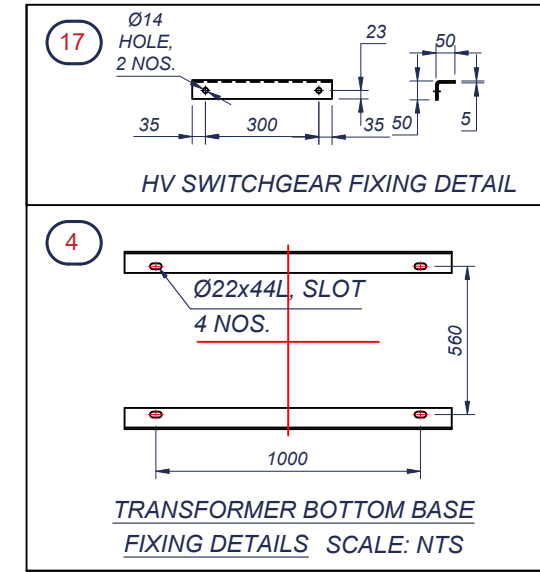
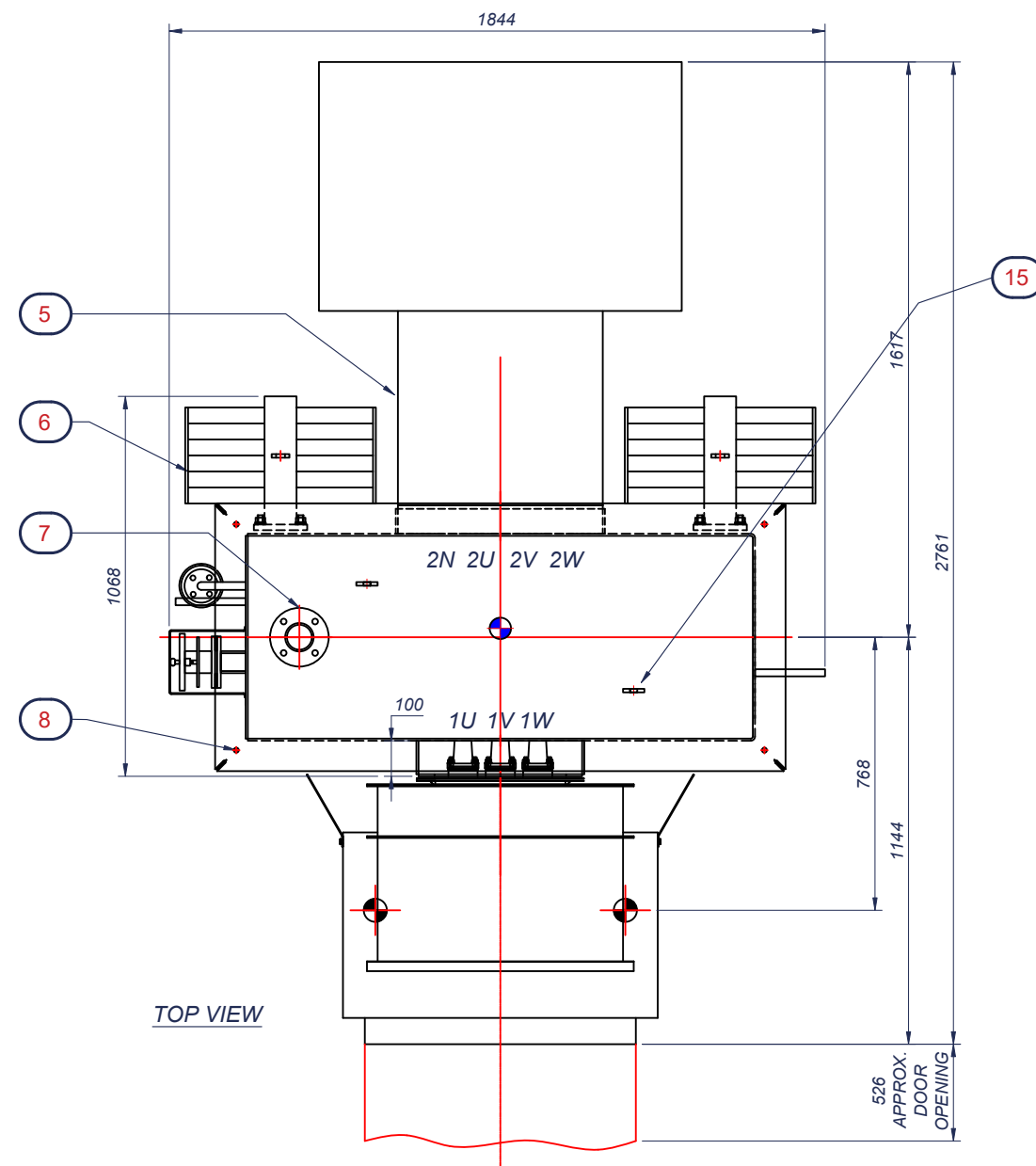
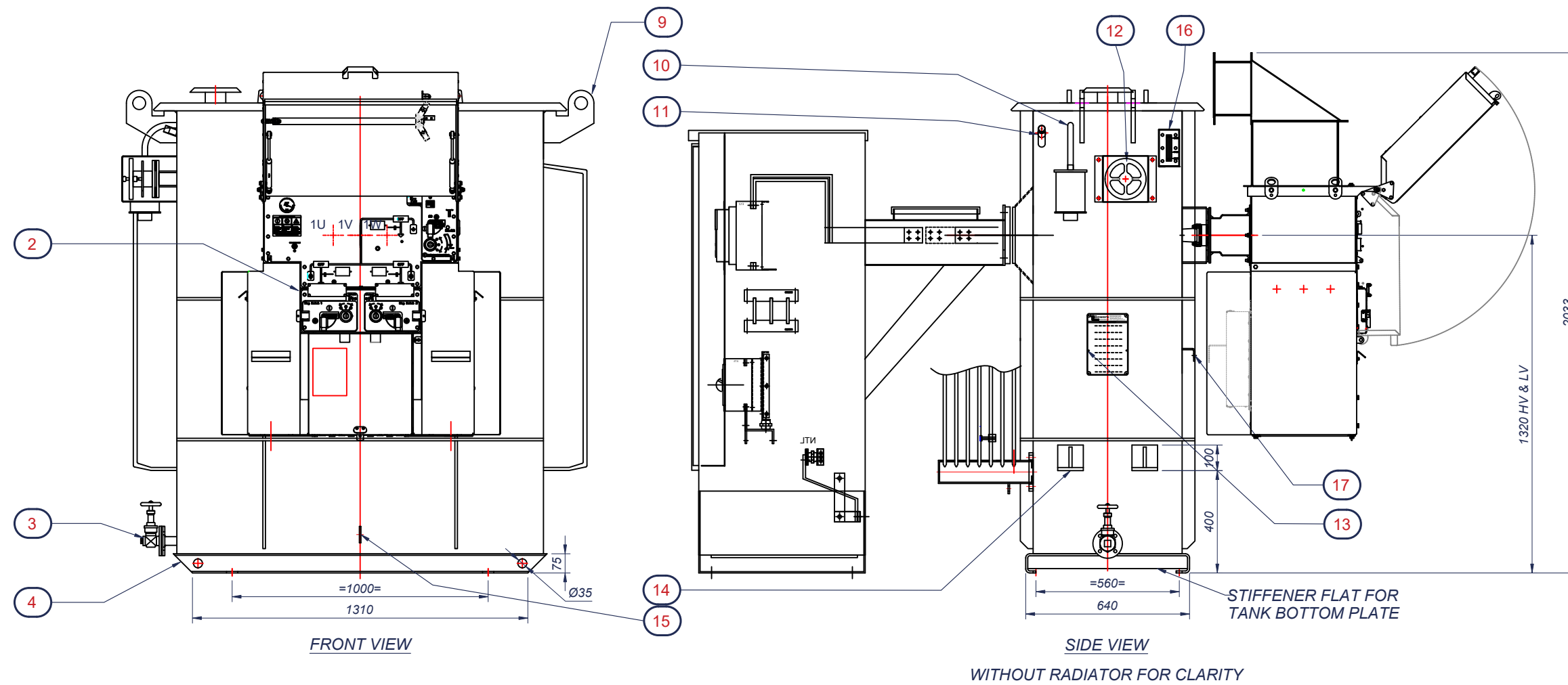
Job Number:
SO200863

Date:
21/02/21

FIRST ANGLE

Scale: **1:20** Size: **A2** Sheet: **1/1**

Rev No:	Revision Note:	Date:	Drn:	App:



NOTES:-

- DIMENSIONS & WEIGHTS ARE SUBJECT TO ±5% TOLERANCE, HOWEVER THE DIMENSIONS WILL NOT CROSS THE ENATS.35-1 SPECIFICATION DIMENSIONS.
- PAINTING: DARK ADMIRALTY GREY 632 OF BS 381C, ISO-12944-2 CATEGORY C4
- THIS IS OGA DRAWING ONLY, EXACT LOCATION OF ACCESSORIES & FITTING MAY VARY DURING MANUFACTURING.
- EXCEPT OUTLINE ARRANGEMENT OF TRANSFORMER ALL PART DETAILS PREPARED FOR NOT TO SCALE FOR BETTER VISIBILITY
- HV, LV CABLE BOX GLAND PLATES WILL BE PROVIDED WITH Ø6 MM PILOT HOLES

17	HV SWITCHGEAR FIXING DETAIL (50x50x5 THK. MS.ANGLE)
16	PRISMATIC OIL LEVEL INDICATOR
15	EARTHING TERMINAL SUITABLE FOR M12 BOLT (ONE ON EACH SIDE) (SS-316)
14	JACKING PADS
13	RATING AND TERMINAL MARKING PLATE
12	OFF-CIRCUIT TAP SWITCH (MODEL: 12kV 100A, 6 POSITION) WITH ENCLOSED COVER
11	THERMOMETER POCKET SUITABLE FOR 3/4" BSP MALE CONNECTION
10	BREATHER FIXING PIPE WITH 3/4" BSP MALE CONNECTION (BREATHER WILL BE SUPPLY LOOSE)
9	LIFTING LUGS FOR COMPLETE TRANSFORMER
8	BOLTED TYPE TOP COVER
7	LIQUID FILLING PIPE WITH COVER
6	PSR RADIATOR BOLTED TYPE (1100X520X 7FINS)
5	LV CABINET
4	SKID TYPE UNDER BASE ARRANGEMENT (Ø35)
3	DRAIN VALVE WITH PLUG & SAMPLER (MODEL : 25 mm, PN16)
2	RN2d RING MAIN UNIT WITH RMR-F675 CHIMNEY FOR INDOOR USE
1	LIFTING LUGS (ONLY FOR TOP COVER)
No.	DESCRIPTION

BOWERS JOB No.	SO200863
OUTPUT	1000 kVA
VOLTAGE RATIO	11000 / 415
AMPERES	52.49 / 1391.21
PHASES	3
FREQUENCY	50Hz
VECTOR SYMBOL	Dyn11

ESTIMATED WEIGHTS	KG
CORE AND WINDINGS	2380
COOLING LIQUID 800 LTRS	680
TOTAL WEIGHT	5180

Revision: 0

This drawing is **COPYRIGHT** and the property of Bowers Electricals Ltd. It must not be copied (in whole or in part) without prior written consent of the company. ©

TOLERANCE UNLESS OTHERWISE STATED
± 0.5mm FOR DIMENSIONS UP TO 250mm:
± 1mm FOR DIMENSIONS UP TO 1000mm:
± 2mm FOR DIMENSIONS OVER 1000mm.

